

# Avaya IP Office UC110 Module Installation and Set Up Telquest Tech Support

**Note: The UC110 will only work on KSU's with Release 8.0 and higher.**

Power the KSU down

Install the UC110 Module in any slot.

Power the KSU up.

Connect the KSU and your computer to the same LAN.

**Do not use the RJ-45 Jack on the front of the UC 110 Module.**

The UC110 can be accessed by using the IP Address of the KSU followed by Port Number 7070

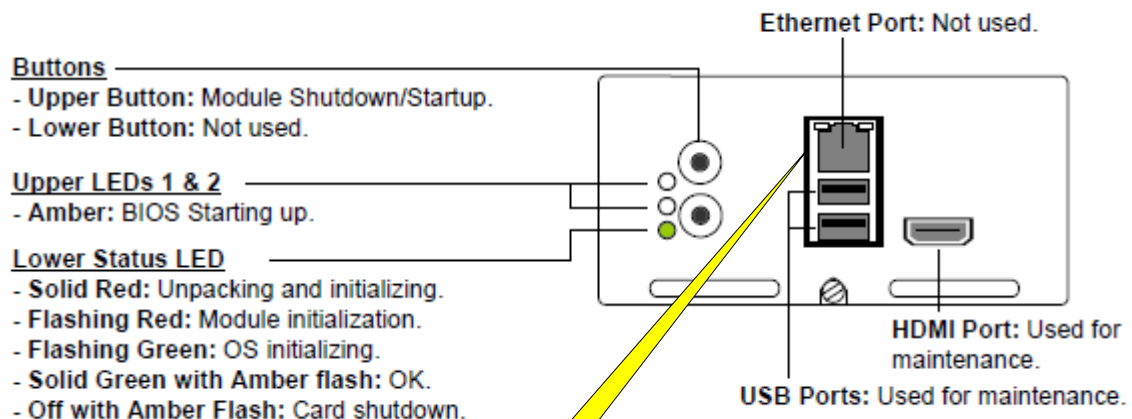
Example:

If your KSU is 192.168.1.123 then the UC110 will be found at <http://192.168.1.123:7070>

The Logon is: **webcontrol**

The Password is: **web**

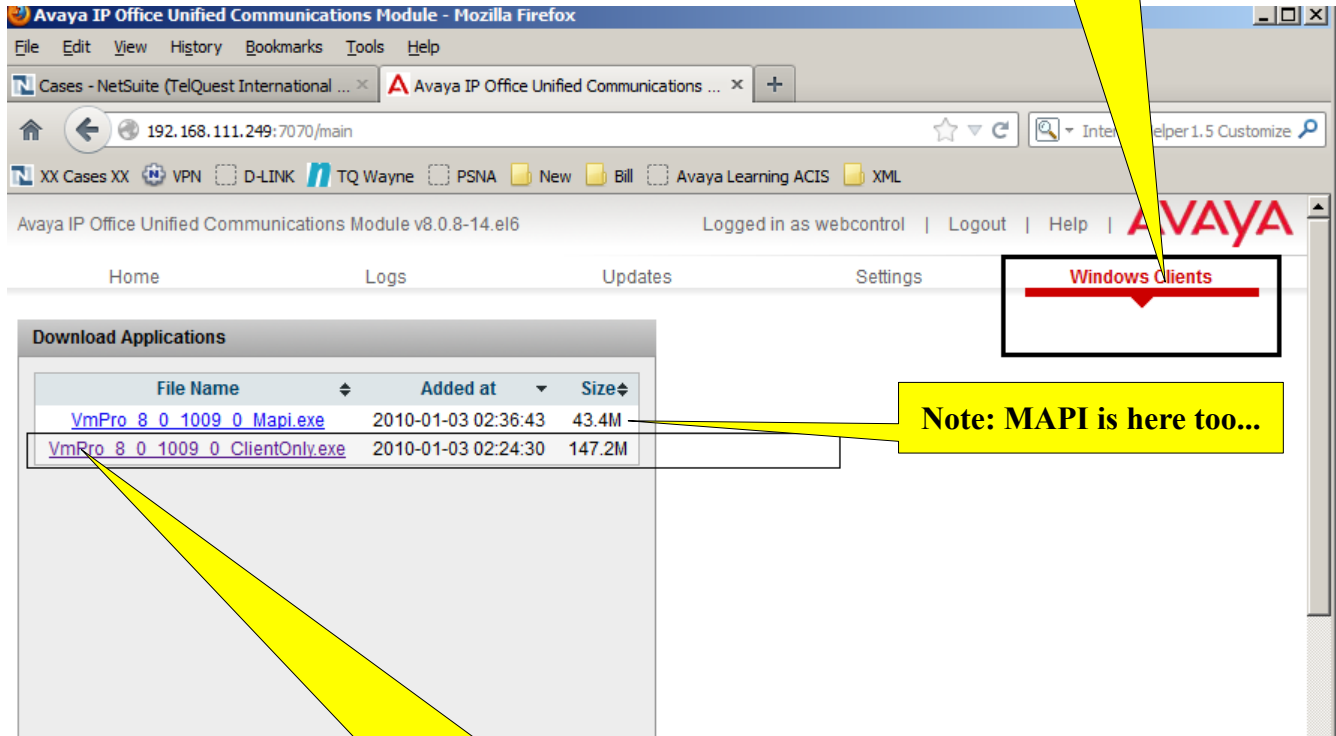
**Button and LED Info for the UC110 Module, Front View:**



**DO NOT Connect to this port... DO NOT remove the protective cover...**

After you connect to the UC110, follow these instructions:

1. Click here...



Note: MAPI is here too...

2. Click here to download and install the VM Pro Client. It is used to program the VM Pro

After you install the VM Pro Client, you can begin to program it or use the VM Pro Exercises Manual and learn the product.

#### VM Pro Exercises

[http://www.ipofficeinfo.com/docs/voicemail\\_pro\\_exercises.pdf](http://www.ipofficeinfo.com/docs/voicemail_pro_exercises.pdf)

#### VM Pro Implementation

<http://downloads.avaya.com/css/P8/documents/100163127>

#### VM Pro Installation

<http://downloads.avaya.com/css/P8/documents/100162853>

## KSU Set Up for UC110

You really don't need to make any changes here.  
Just look at it to be sure it is correct.

1. Click here...

2. Click here...

3. Select this...

VM Pro Client Icon

Avaya IP Office R8.1 Manager - 8-1(52) Demo [8.1(43)] [Administrator/Administrator]

File Edit View Tools Help

IP Offices System 8-1(52) Demo

BOOTP (11)  
Operator (3)  
8-1(52) Demo  
System (1)

Name  
8-1(52) Demo

System LAN1 LAN2 DNS Voicemail Telephony Directory Services Sys

Voicemail Type Voicemail Lite/Pro

Voicemail Destination

Voicemail IP Address 169 . 254 . 0 . 2

Backup Voicemail IP Address 0 . 0 . 0 . 0

This is the default  
INTERNAL  
IP Address of the UC110

Do not change this.  
This is not where you set the  
LAN IP Address of the VM

Most of the programming will be done using the VM Pro Client software.

A quick test to see if the UC110 is working is to dial \*17 (STAR 17) on a phone and see if the greeting answers you.

You can connect **INITIALLY** to the UC100 by using the KSU's IP Address and Port 7070.

Example:

My KSU is set to 192.168.111.123

I would use any web browser and enter <http://192.168.111.123:7070> into the Address Bar.

Connecting to the UC110 by **this** IP Address and Port Number, is usually done once during setup.

Once you have made the INITIAL connection to the UC100 via the KSU's IP Address and Port 7070 with a browser, you can continue with the set up.

The Logon is webcontrol

The Password is web

**The UC100 needs a LAN IP Address to send out Emails and any other feature that require a network connection.**

It is internally connected to the LAN jack on the rear of the KSU.

**1. Click here...**

**2. Click here...**

**3. Set these four areas to work on your network**

**Note: This IP Address Should be different than the KSU's.**

The screenshot shows the Avaya IP Office Unified Communications Module web interface in Mozilla Firefox. The browser address bar shows the URL 192.168.111.249. The page is titled "Avaya IP Office Unified Communications Module - Mozilla Firefox". The main content area shows the "Settings" tab selected, with the "System" sub-tab active. The "Network" section contains the following fields:

- Network Interface: eth0.1
- Host Name: uc-module
- ☐ Use DHCP
- IP Address: 192.168.111.249
- Subnet Mask: 255.255.255.0
- Default Gateway: 192.168.111.1
- DNS: 8.8.8.8
- ☐ Automatically obtain DNS from provider

The "Date and Time" section contains the following fields:

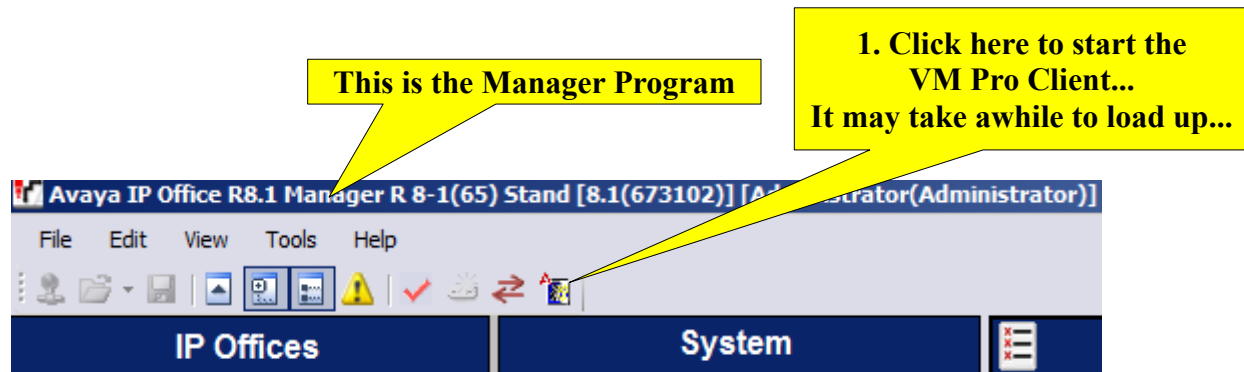
- Date: 2013-07-12
- Time: 09 : 24
- Timezone: America/New\_York
- ☒ Enable Network Time Protocol
- NTP Servers: 64.90.182.55
- ☐ Synchronize system clock by NTP service
- ☐ Use local time source

Buttons for "Save" are located at the bottom of both the "Network" and "Date and Time" sections.

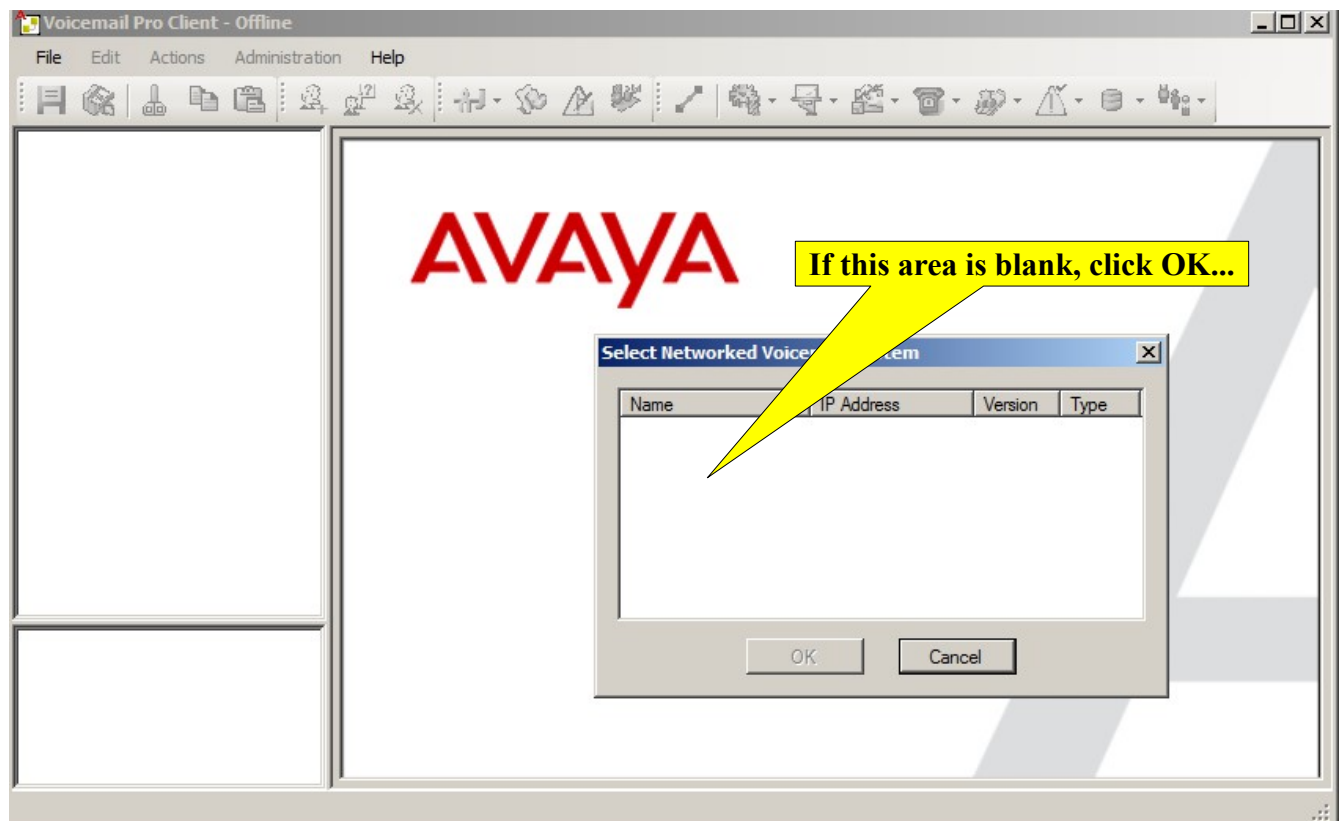
Now the UC100 will have its own LAN IP Address.

You will use this IP Address in the future to Service the UC110.

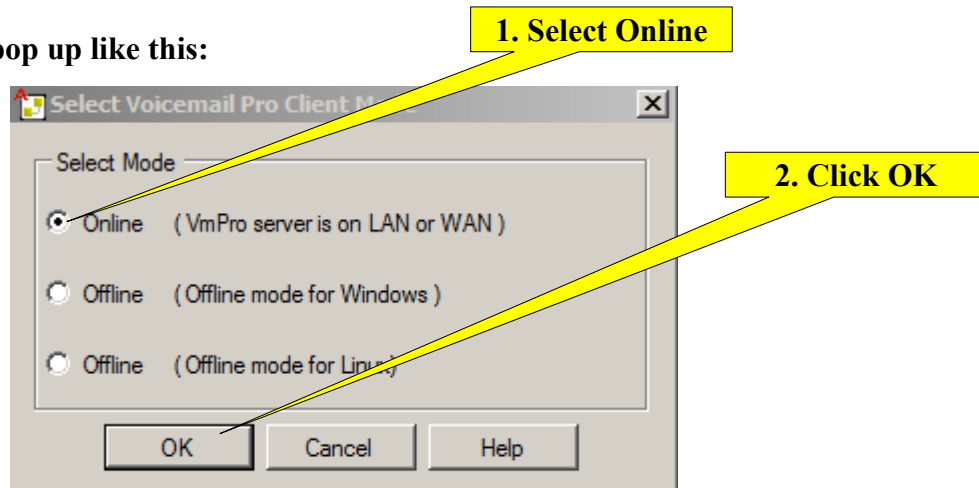
To program the UC110 (VM Pro) you will use the VM Pro Client.



You will see a screen like the one below:



You will see a pop up like this:



You will see a pop up like this:

